

# NATIONAL SURVEY SERVICE, INC.

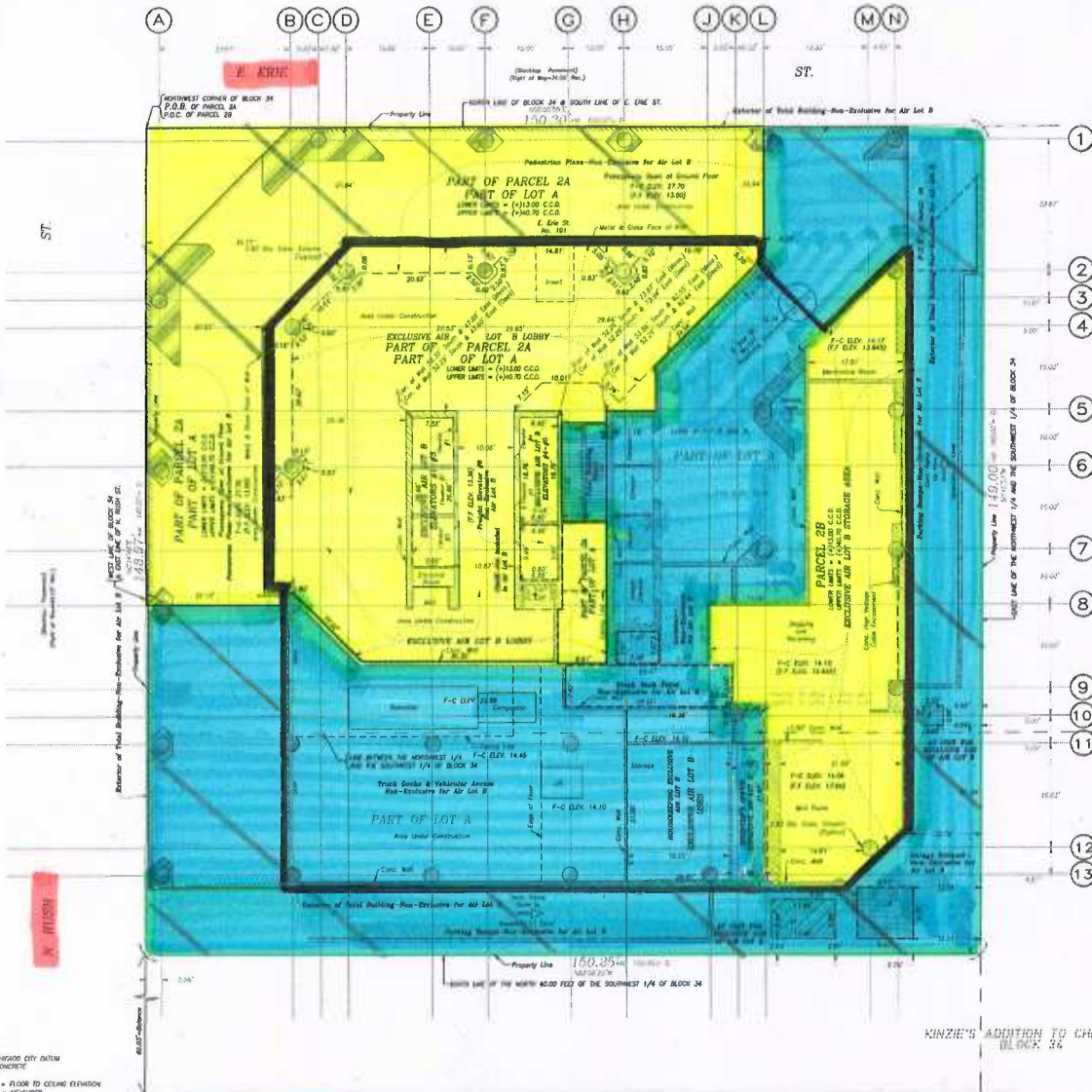
## Plat of Survey

KNOWN AS: 101 E. ERIC STREET, CHICAGO, ILLINOIS  
SURVEY FOR: PERKINS COIE LLP

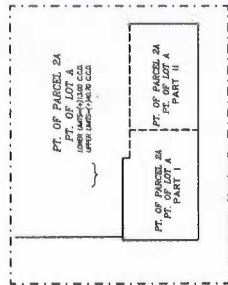
SURVEY NO. N-120179 SURVEY  
N-120489 3D SURVEY  
N-120816 SURVEY  
N-120852 SURVEY

DATE: JULY 15, 2013  
OCT. 14, 2014  
FEB. 23, 2016  
MAY 1, 2016

- Proposed Leasehold
- Retained by MWRD
- Outdoor Plaza



LEGEND:  
C.C.D. = CHICAGO CITY DATUM  
CONC. = CONCRETE  
D. = DEED  
F.C. ELEV. = FLOOR TO CEILING ELEVATION  
MEAS. (M) = MEASURED



PARCEL 2A DETAIL  
Scale 1"=4'

### IMPORTANT

ALL DIMENSIONS SHOULD BE ASSUMED BY SCALE MEASUREMENTS UNLESS OTHERWISE INDICATED. DIMENSIONS ARE SHOWN IN FEET AND DECIMAL PORTIONS THEREOF. THUS, 4'-4.87" MEANS 4 FEET AND .86 FEET, OR 4 FEET AND 10.32 INCHES, THUS, 4'-4.87" IS 4 FEET AND 10.32 INCHES.

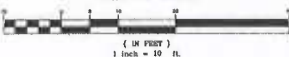
© NATIONAL SURVEY SERVICE, INC. 2016 "ALL RIGHTS RESERVED"

PARCEL 2A SCHEDULE			
PURSE #	LOWER LIMITS	UPPER LIMITS	AREA SQ. FT.
PT. OF PARCEL 2A	13.00	40.70	8,353.9
PART I	13.00	27.49	111.0
PART II	13.00	29.52	99.0
TOTAL			8,563.9

PARCEL 2B SCHEDULE			
PURSE #	LOWER LIMITS	UPPER LIMITS	AREA SQ. FT.
PARCEL 2B	13.00	40.70	2,187.2

ELEVATIONS ARE IN REFERENCE TO THE CITY OF CHICAGO DATUM (C.C.D.)  
SUB-BENCHMARK # 4355.  
LOCATED AT THE INTERSECTION OF N. FAIRBANK CT. & E. ERIC ST.  
MARK OUT "TOP" ON BOTTOM STEP AT EAST SIDE OF ENTRANCE ON NORTH SIDE  
OF 7 STORY BRICK BLDG. MARK IS 35.45 FT. WEST OF THE NORTHEAST  
CORNER OF BLDG. AT SOUTHWEST CORNER OF N. FAIRBANK CT. AND E. ERIC ST.  
ELEV.=13.890 C.C.D. (CHICAGO CITY DATUM)

### GRAPHIC SCALE



EASEMENT SCHEDULE (Appurtenant to Parcel 1)			
PARCEL NO.	OCCUPATION	REVIEWS	EXCLUSIVE PORTION
2	A.C. LIMITS	AIR LOT B	YES
2	STORAGE AREAS	AIR LOT B	YES
2	ELEVATORS (#1-5)	AIR LOT B	YES
2	LOBBY	AIR LOT B	YES
2	HOUSEKEEPING & ENGINEERS OFFICE	AIR LOT B	YES
2	RECEPTION & SHOWS	AIR LOT B	NO
2	FREIGHT ELEVATOR	AIR LOT B	NO
2	TOTAL BUILDING STAIRS	AIR LOT B	NO
2	EXTERIOR TOTAL BLDG	AIR LOT B	NO
2	TRUCK DOCKS & VEHICULAR ACCESS	AIR LOT B	NO
2	PROCESSION PLAZA	AIR LOT B	NO
2	DRIVE ENDS	AIR LOT B	NO
2	PARKING SPACES	AIR LOT B	NO
2	LAUNDRY	AIR LOT B	NO
2	EMERGENCY	AIR LOT B	NO

N-120852 SURVEY MAY 1, 2016  
N-120816 SURVEY FEB. 23, 2016  
N-120489 3D SURVEY OCT. 14, 2014  
SURVEY NO. N-120179 SURVEY DATE: JULY 15, 2013

State of Illinois, Inc.  
County of Cook,  
We Certify that we have surveyed the above described property in accordance with official records and that the above plat is a true reproduction of said survey. Observations are corrected to a temperature of 62° Fahrenheit. This professional service conforms to the current Illinois minimum standards for a boundary survey.  
**NATIONAL SURVEY SERVICE, INC.**  
PROFESSIONAL LAND SURVEYORS  
30 S. MICHIGAN AVENUE, SUITE 200  
CHICAGO, ILLINOIS 60605  
WWW.NATIONALSURVEYSERVICE.COM  
TEL: 312-630-9480 FAX: 312-630-9484

BY: \_\_\_\_\_  
NATIONAL SURVEY SERVICE, INC.  
Page 2 of 2