

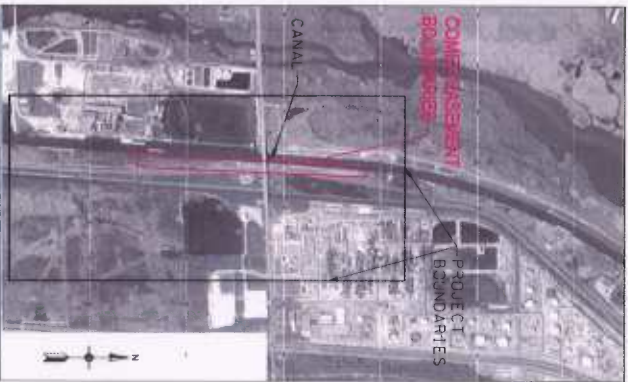


US Army Corps
of Engineers
Chicago District

CHICAGO SANITARY SHIP CANAL FISH BARRIER I - PROJECT B REAL ESTATE EXHIBIT ROMEOVILLE, ILLINOIS



LOCATION MAP
(N.T.S.)



VICINITY MAP
(N.T.S.)

USACE REAL ESTATE EXHIBIT PREPARED FOR COMED
PERMANENT BARRIER I DUCTBANK EXTENSION
MAY 2016

TOTAL EASEMENT AMOUNTS REQUIRED
MMRD = 52,484 Sq. Ft.
BNSF = 21,558 Sq. Ft.

SHEET IDENTIFICATION EXHIBIT NO. 1 OF 3	FISH BARRIER - PROJECT B 34.5 KV ELECTRICAL REAL ESTATE EXHIBIT	U.S. ARMY CORPS OF ENGINEERS CHICAGO DISTR CT CHICAGO, IL 60604	DESIGNED BY JON LAMBE, PE DATE 04/20/16	CHECKED BY JAC DATE 05/12/16	PROJECT NUMBER 16130114C-021	DATE 04/20/16	PROJECT NUMBER 16130114C-021	DATE 04/20/16	PROJECT NUMBER 16130114C-021	DATE 04/20/16
	34.5 KV ELECTRICAL REAL ESTATE EXHIBIT	U.S. ARMY CORPS OF ENGINEERS CHICAGO DISTR CT CHICAGO, IL 60604	DESIGNED BY JON LAMBE, PE DATE 04/20/16	CHECKED BY JAC DATE 05/12/16	PROJECT NUMBER 16130114C-021	DATE 04/20/16	PROJECT NUMBER 16130114C-021	DATE 04/20/16	PROJECT NUMBER 16130114C-021	DATE 04/20/16