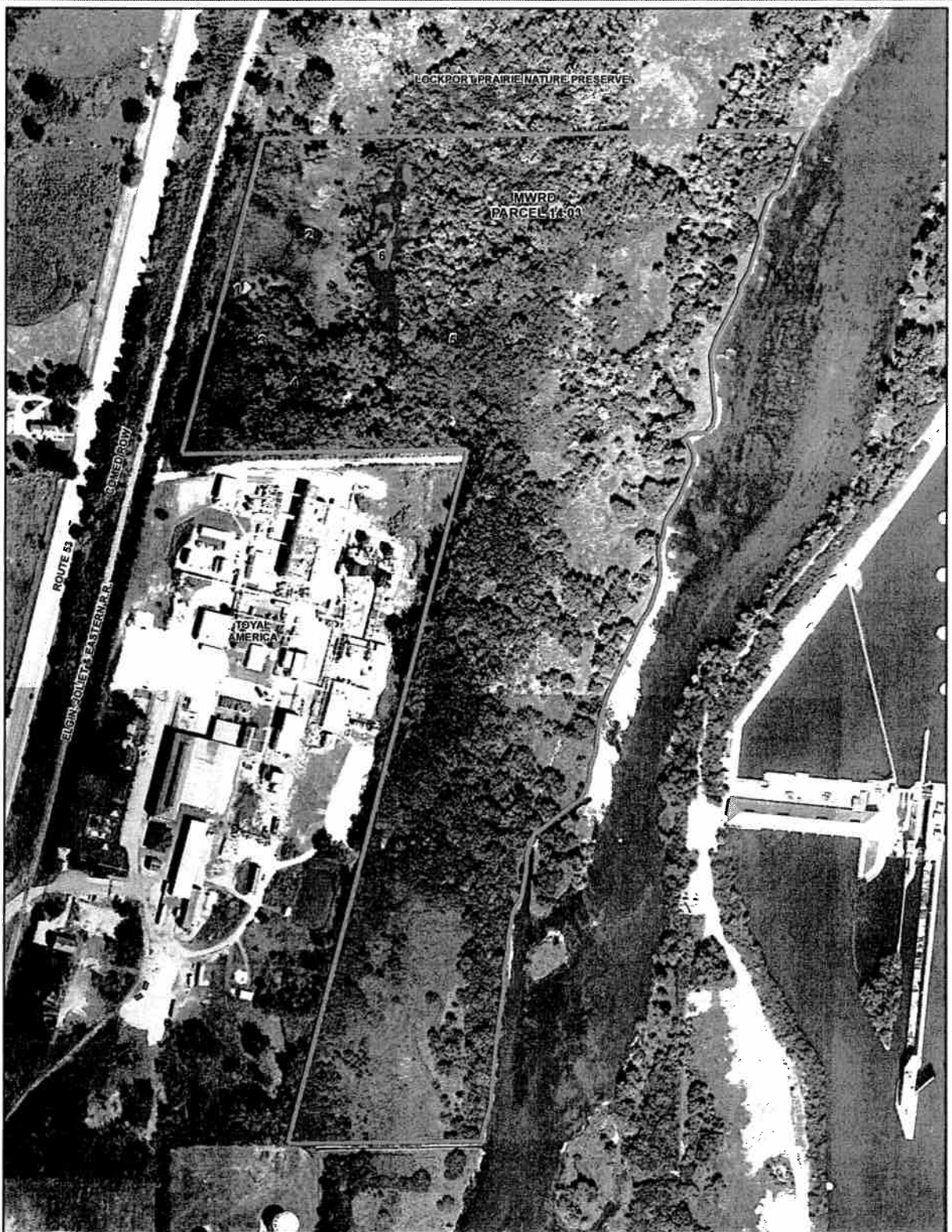


Charge Order Log Report

Original Value: 25,000.00
 Approved Value: 100,000.00
 Current Value : 100,000.00

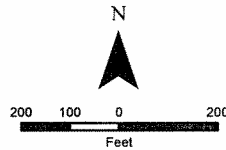
PO No. : 3047153
 Tracking No. : 30332
 Vendor No. : 5001606

Charge Number	Text	Value	Initiator	Date	File Letter	CDR #	Board Approval	Status	Approver	Seq. No.	Charge Number	Object Class
0001	Charge Order EOC 9/18/08 #08-1986	75,000.00	SPNSFIELD	09/23/2008				Rejected	USPALM	0001	3184238	ENNGELEG
0002	Re Ord 9-18-08, Agenda 08-1986, pt 1	75,000.00	IPALM	10/01/2008				Approved	USPALM	0002	3195876	ENNGELEG
0003	Deputation of NCC to add 2009 line	51,667.12	NEPWERU	06/30/2009				Approved	USNEPWERU	0003	3507184	ENNGELEG
										0003	3507185	MM_SERVICE
										0003	3507187	MM_SERVICE
0004	INC portion of NCC to add 2009 line	51,667.12	NEPWERU	07/01/2009				Approved	USNEPWERU	0004	3507410	ENNGELEG



Note: Orthophotograph taken by USGS in Spring, 2009.
 Source: <http://seamless.usgs.gov>

Legend	
	MWRD Parcel 14.03 Property Boundary
	Blue-Tinted Wood Chips
	Piles of Blue-Tinted Wood Chips
	Semi-Solid Tarry Material
1	Investigation Area Identification Number



URS		100 South Wacker Drive Suite 500 Chicago, Illinois 60606	
Investigation Areas Removal Delineation MWRD Parcel 14.03 Lockport, Illinois			
DESIGN: SG	CHKD: --	PROJECT NO:	FIG NO:
DRAWN: MDC	DATE: 1/24/08	25366571	1

