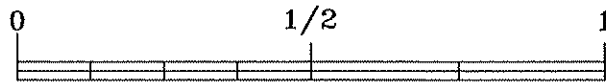
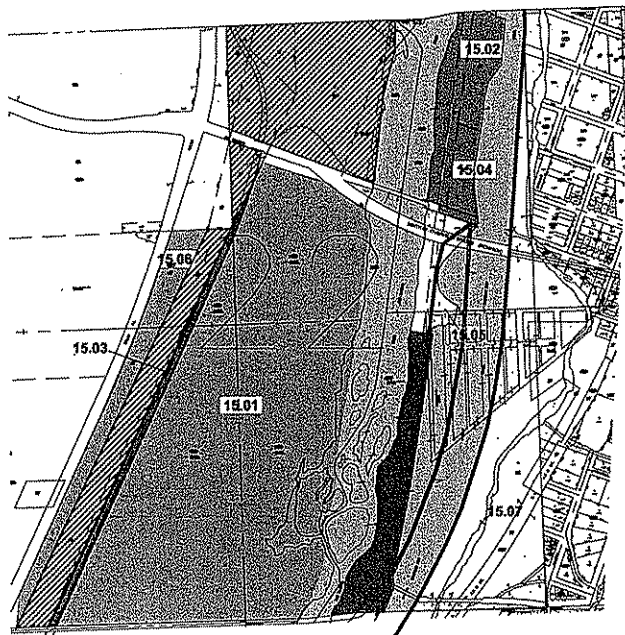


RIGHT OF WAY OF THE MAIN CHANNEL

-  PARKS/RECREATION
-  LEASED
-  VACANT
-  CORPORATE USE
-  WATERWAYS

NOTE: ALL RIGHT OF WAY THAT HAS BEEN CROSSHATCHED
HAS BEEN SOLD OR DEDICATED BY THE
METROPOLITAN WATER RECLAMATION DISTRICT



SCALE OF MILES

Revised 11/04