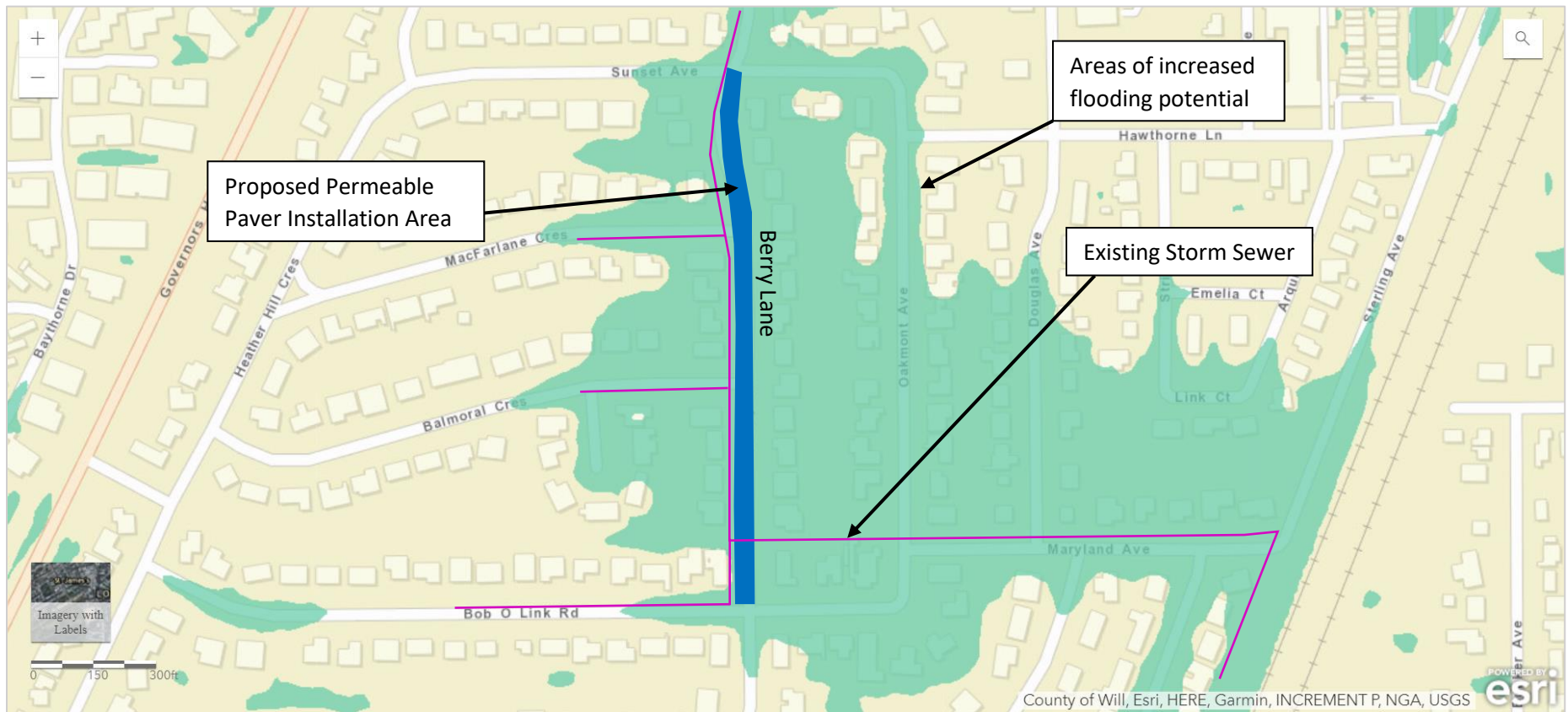


Berry Lane Concept Plan

Source: Illinois Topographic Wetness Index (TWI)

- TWI shows areas with increased accumulated runoff potential, and areas with low slope and large upslope contributing areas.



Permeable Pavers:

Roadway Dimensions – 1,240 LF in length; 24 LF in width

Total Area – 29,760 SF



Existing Storm Sewer