



# Metropolitan Water Reclamation District of Greater Chicago

## PUBLIC HEARING

Environmental Impacts

20-858-3D

Rehabilitation of North Branch  
Pumping Station, NSA &  
Modification of Pipe Supports, KWRP  
May 6, 2021



# State Revolving Fund Loan

- **IEPA Conducts an Assessment of Environmental Impacts of the Project**
- **Assessment is Based on:**
  1. **Illinois Department of Natural Resources Review**
  2. **Illinois State Historic Preservation Office Review**
  3. **MWRDGC Review**
    - a. **Rare and Endangered Species (IDNR)**
    - b. **Historical, Archaeological and Cultural Resources (IHPO)**
    - c. **Prime Agricultural Land**
    - d. **Air and Water Quality**
    - e. **Recreational Areas**
    - f. **Ecosystems and Wetlands (IDNR)**
    - g. **Floodplains**
    - h. **Wild and Scenic Rivers**
    - i. **Community/Aesthetics/Traffic/Noise**
    - j. **Stream Crossings**





# North Branch Pumping Station





# History of the Project

- **16-079-3D Rehabilitation of the North Branch Pumping Station, NSA was awarded on August 2, 2018**
- **Scope included:**
  - **Providing grouted fiberglass fiber reinforced plastic jackets around the existing concrete columns to protect columns from erosion.**
  - **Rehabilitation of underwater deteriorated concrete of the east wall and under the deck wall.**
  - **Rehabilitation of deteriorated concrete stairs and concrete deck, balustrade and deck lighting.**
- **After construction was initiated, it was determined that the concrete deck was in an irreparable condition and required complete replacement rather than spot repairs**



# North Branch Pumping Station





# Scope of Work of the Project

## North Branch Pumping Station

- **Replacing deteriorated concrete deck, stairs, balustrades and balustrade light fixtures**
- **Repairing cracks and spalls on exterior concrete walls**
- **Replacing windows at four locations with louvers**
- **Replacing two 10ft x 10ft timber flap gates at DS-91 adjacent to the NBPS**

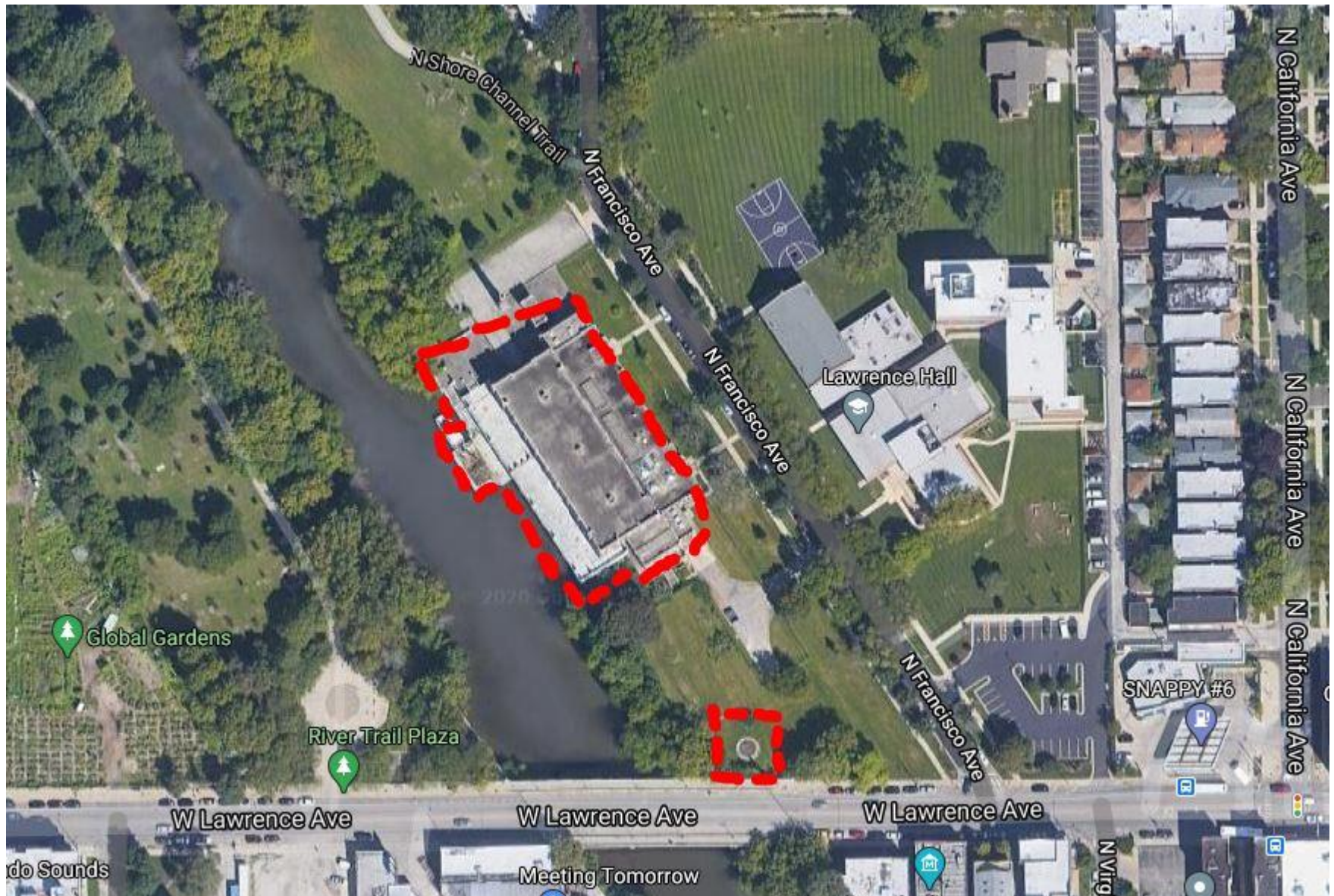


# North Branch Pumping Station





# DS-91





# Scope of Work of the Project

## Kirie WRP

- **Replacing/Retrofitting of pipe supports and dresser couplings for the discharge headers of Raw Sewage Pumps 1, 2 and 3**



# Kirie WRP





# Environmental Impact Assessment

- **MWRDGC**
  - No adverse environmental impacts
- **Illinois Department of Natural Resources**
  - Adverse effects unlikely
- **Illinois State Historic Preservation Office**
  - North Branch Pumping Station is eligible for listing on the National Register of Historic Places
  - No adverse effect provided “Standards for Rehabilitation and Guidelines for Rehabilitating Historic Buildings” are met



# Questions and Comments

- **Public's comments are sought regarding project planning and environmental impacts of the proposed project**

