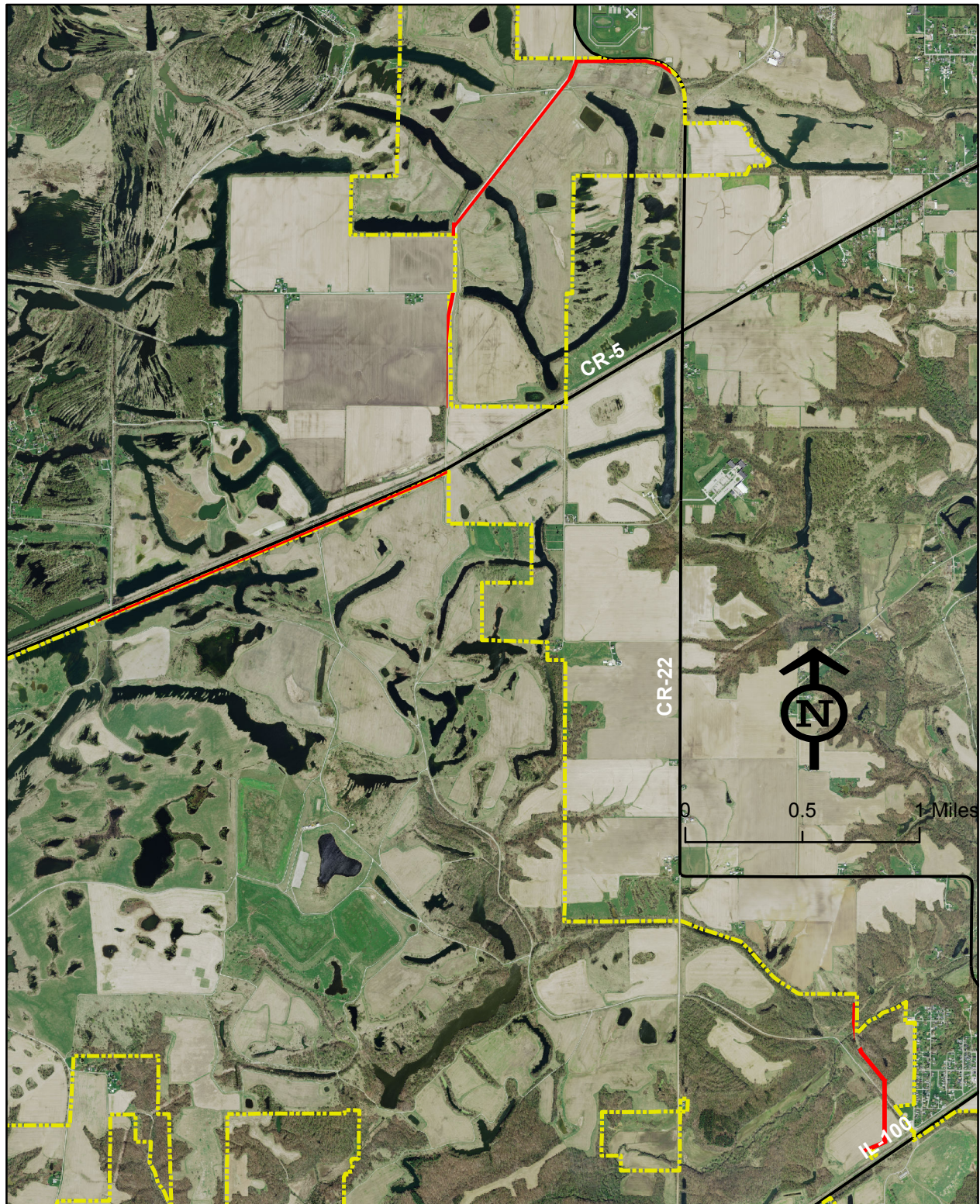


PRAIRIE POWER, INC. EASEMENT
SOUTH OF THE CITY OF CANTON AND THE VILLAGE OF ST. DAVID
IN FULTON COUNTY



Legend

- PROPOSED PRAIRIE POWER EASEMENT LOCATION
- MWRD PROPERTY LINE
- STATE/COUNTY HIGHWAYS

BY: J. HADSALL AG
TECH II, MWRD
10/14/2022

TOTAL EASEMENT AREA EQUALS +/-28.37 ACRES